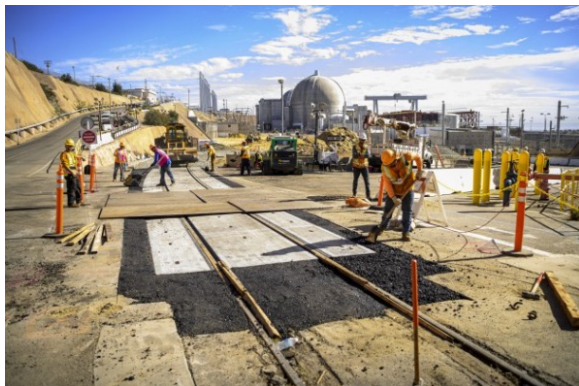


RAIL LINE EXPANSION KEY TO DEMOLITION PROGRESS

As work continues to safely decommission SONGS, there are many different demolition projects simultaneously underway. Over the course of this lengthy, complex project, it is anticipated that over a billion pounds of decommissioned materials will be removed. As the majority will be transported off-site using rail service, expanding the existing line was the focus during the last quarter of 2021 and will continue in 2022. This will accommodate more than 5,000 rail cars needed for debris and material removal. One railcar equals six truckloads, so utilizing rail service is highly efficient and more environmentally friendly. After deconstruction is complete, the rail line, which is composed of ferrous metals, can be recycled, avoiding generation of landfill waste.

The design includes new sections as well as an extension of existing track to store 50 rail cars and includes scales to ensure that loads do not exceed weight limits. To accomplish this, extensive grading and compaction was necessary for a stable foundation. This work is being safely coordinated concurrently with ongoing rail transport for waste removal, and should be completed in the first quarter of 2022.



Crews work to expand the rail line needed to transport materials off-site.

Decommissioning
San Onofre
Nuclear Generating Station
Safety | Stewardship | Engagement



5000 Pacific Coast Highway
San Clemente, CA 92674

To contact our deconstruction liaison,
call **800-681-6868** or email us at
SONGSdecomm@sce.com



Decommissioning
San Onofre
Nuclear Generating Station
Safety | Stewardship | Engagement

SAN ONOFRE DECOMMISSIONING UPDATE

**DECEMBER
2021**

First, let me wish you and yours a Happy New Year and I hope you had an enjoyable holiday season with family and friends.

We closed out 2021 at SONGS with a tremendous amount of work that positions our team for a strong year in 2022.

In 2021, we were able to:

- Demolish 27 of 62 buildings and structures, though obviously some large ones remain, such as the containment domes.
- We safely shipped about 60 million pounds of waste off-site, most of it crushed concrete from the demolition activity. All of the material was shipped to locations outside of California.
- More than 1,300 train and truck waste shipments left SONGS last year. We expect that number to climb in 2022 as the new railyard begins operation.
- We also conducted four regularly scheduled emergency preparedness drills with our local first responders. These drills were performed while the plant was operating and continue in decommissioning.
- We had over 30 regulatory inspection visits in 2021, including five by the Nuclear Regulatory Commission. No violations were found, which is our goal. These NRC and environmental inspections will continue this year and beyond.

We encourage you to visit our website and sign up for one of our Public Walking Tours to get a first-hand look at the work taking place.

I look forward to providing you with additional updates throughout the year on our progress and items of interest.

Doug Bauder

*Vice President and Chief Nuclear Officer
San Onofre Nuclear Generating Station
Southern California Edison*



DECONSTRUCTION ACTIVITY

WORK ACTIVITY	WORK PERFORMED Q4 2021	WORK AHEAD Q1 2022
North and East areas (parking lot areas) (A)	<ul style="list-style-type: none"> Continued material delivery and removal 	<ul style="list-style-type: none"> Continue material delivery and removal
Containment Buildings (the domes) and connected buildings (B)	<ul style="list-style-type: none"> Continued interior demolition/interference removal Reactor segmentation 	<ul style="list-style-type: none"> Hazardous materials removal Continue interior demolition Reactor segmentation
Support Structures and Buildings (diesel generator buildings, transformers and B/K buildings) (C)	<ul style="list-style-type: none"> Completed removal of hazardous materials Completed above-ground demolition 	<ul style="list-style-type: none"> Staging and material handling area
Administration Building (D)	<ul style="list-style-type: none"> Completed demolition Improvements made to existing rail and began construction of rail yard 	<ul style="list-style-type: none"> Continue construction of rail yard
Turbine Building (E)	<ul style="list-style-type: none"> Continued removal of hazardous materials Began cutting and removal of upper deck components 	<ul style="list-style-type: none"> Continue cutting and removal of upper deck components
Makeup Demineralizer Area (F)	<ul style="list-style-type: none"> Completed tank cleaning Completed demolition of tanks and slabs 	<ul style="list-style-type: none"> Staging and material handling area
Intake/Forebay Structure (G) – see photos on right	<ul style="list-style-type: none"> Completed hazardous material removal Install isolation gates 	<ul style="list-style-type: none"> Begin cleaning and demolition
Site wide	<ul style="list-style-type: none"> Continue site assessments and monitoring Continue waste shipments 	<ul style="list-style-type: none"> Continue site assessments and monitoring Continue waste shipments



The 26 screens and rakes of the intake system, which helped keep debris out of the cooling system, were dismantled. Each component is over 50 feet long and weighs 36,000 lbs.

Schedule is subject to change. In addition to those activities listed above, material deliveries and waste shipments will continue throughout the deconstruction period.