

PLANNING AND PREPARATION – THE KEYS TO SAFELY ACHIEVING DEMOLITION MILESTONES

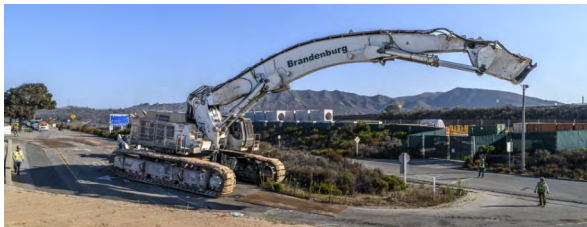
Demolition at the SONGS site continues to be in high gear – especially around the Unit 2 and 3 Turbine Building.

In August, the 445-ton Unit 2 Gantry Crane was successfully released to gracefully glide off the Turbine Deck and fall 40 feet onto a pillow of crushed concrete below. Taking only 35 seconds, this long-anticipated task was months in the making, resulting in a successful and safe activity. The crane was dismantled to become part of the 130 million pounds of waste removed to-date for offsite disposal.

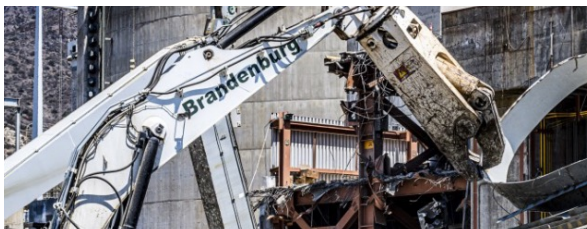
This made way for one of the largest excavators on the West Coast to mobilize and reach deep inside the building structure to remove more internal components. This entire process will be repeated on the Unit 3 side early next year.

Additionally, the intake structures that previously drew ocean water into the facility are currently being dismantled.

For all these activities, proper planning is an essential tool in ensuring demolition operations are executed safely. Successful completion is the product of highly orchestrated planning, an overarching commitment to safety and meticulous teamwork.



Giant excavator ready to mobilize



Dismantlement of Unit 2 gantry crane

Decommissioning
San Onofre
Nuclear Generating Station
Safety | Stewardship | Engagement



5000 Pacific Coast Highway
San Clemente, CA 92674

To contact our deconstruction liaison,
call 800-681-6868 or email us at
SONGSdecomm@sce.com



Decommissioning
San Onofre
Nuclear Generating Station
Safety | Stewardship | Engagement

SAN ONOFRE DECOMMISSIONING UPDATE

OCTOBER
2022

Making Progress, Focusing on Safety

Dismantlement work at SONGS recently reached a milestone: More than 50% of plant structures - 33 of 62, to be exact - have been demolished. Some of this progress is highly visible and dramatic, such as the recent lowering of the 445-ton Unit 2 Gantry Crane as the Turbine Building demolition continues. And some is out-of-sight, such as the work going on inside the containment buildings at different levels within the domes to surgically remove the equipment that once operated the plant.

Along with our progress comes an increase in the amount of industrial waste that is safely shipped from SONGS. As of September, we have sorted, packaged, and shipped offsite more than 130 million pounds of waste to licensed facilities.

While the locations and type of work going on at the plant may be different, the common themes for all these projects is an overarching commitment to safety, highly orchestrated planning, and the meticulous teamwork of SCE, SONGS Decommissioning Solutions (SDS) and our contracting partners.

PPE is Key

This commitment to safety includes ensuring all workers have the appropriate personal protective equipment (PPE) so they can do their jobs without injury. Heavy industrial demolition work at a nuclear facility requires a vast array of PPE beyond standard fare — hard hats, steel-toe shoes, safety glasses, high visibility vests, and hearing protection. Each job that's conducted on-site includes a thorough analysis of the hazards workers may face and what specialized protective gear must be worn, such as fall protection if working above certain heights, flotation devices if near water, dosimeters and special clothing if working in a radiological controlled area, heat-resistant clothing, and gloves and head gear for conducting hot work such as cutting with torches.

Learn more about decommissioning progress and our approach to safety and how we factor it into everything we do at SONGSCommunity.com

Doug Bauder

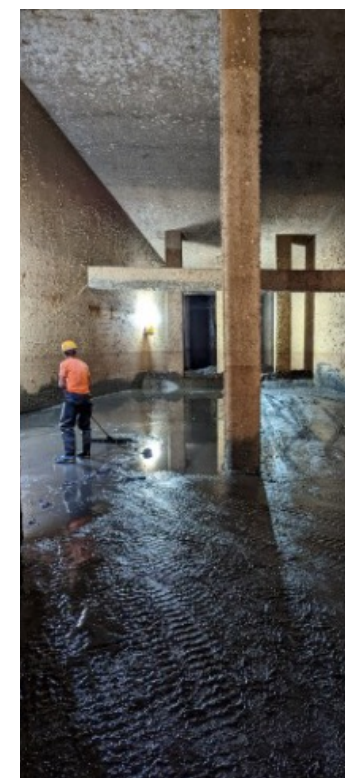
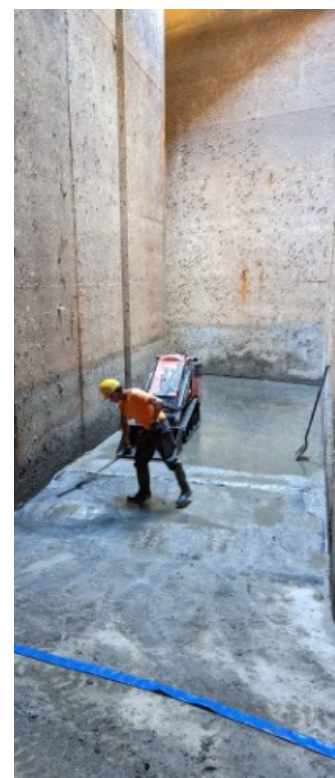
Vice President and Chief Nuclear Officer
San Onofre Nuclear Generating Station
Southern California Edison



DECONSTRUCTION ACTIVITY

WORK ACTIVITY	WORK PERFORMED Q3 2022	WORK AHEAD Q4 2022
North and East (parking lot) areas (A)	<ul style="list-style-type: none"> Continued material delivery and removal Installed temporary office trailers in former reservoir parking lot 	<ul style="list-style-type: none"> Continue material delivery and removal
Containment Buildings (the domes) and connected buildings (B)	<ul style="list-style-type: none"> Continued hazardous material removal Continued interior demolition Continued reactor segmentation 	<ul style="list-style-type: none"> Continue hazardous material removal Continue interior demolition Continue reactor segmentation
Outer Buildings (administration and B/K buildings) (C & D)	<ul style="list-style-type: none"> Managed material and load railcars Installed rail scale and switch 	<ul style="list-style-type: none"> Manage material and load railcars
Turbine Buildings (E)	<ul style="list-style-type: none"> Completed asbestos cable removal Continued component removal and structure demolition 	<ul style="list-style-type: none"> Continue component removal and structure demolition
Intake/Forebay Structure (F)	<ul style="list-style-type: none"> Installed gates to isolate intake structure from ocean Completed water removal in the forebay Removed materials for packaging and off-site disposal 	<ul style="list-style-type: none"> Clean and survey the intake structure and forebay
Site wide	<ul style="list-style-type: none"> Continued site assessments and monitoring Continued waste shipments 	<ul style="list-style-type: none"> Continue site assessments and monitoring Continue waste shipments

Schedule is subject to change. In addition to those activities listed above, material deliveries and waste shipments will continue throughout the deconstruction period.



Inside the Intake. The intake structure is mostly underground and 26.5 feet below sea level. Cleaning of the Unit 3 intake structure has started by removing sludge, debris and barnacles.