



Decommissioning
San Onofre
Nuclear Generating Station

Safety | Stewardship | Engagement

LEARN MORE ABOUT THE DECOMMISSIONING OF THE SAN ONOFRE NUCLEAR POWER PLANT.

COME

to the plant and take a walking tour. Scan this QR code to schedule your next visit.



VISIT

songscommunity.com for the most current information about our decommissioning activities and deconstruction schedule.

TALK TO US

We'd be happy to come share information about the plant with you, your community association or organization.

Decommissioning
San Onofre
Nuclear Generating Station



5000 Old Pacific Highway
San Clemente, CA 92674

To contact our deconstruction liaison,
call **800-681-6868** or email us at
SONGSdecomm@sce.com



Decommissioning
San Onofre
Nuclear Generating Station

Safety | Stewardship | Engagement

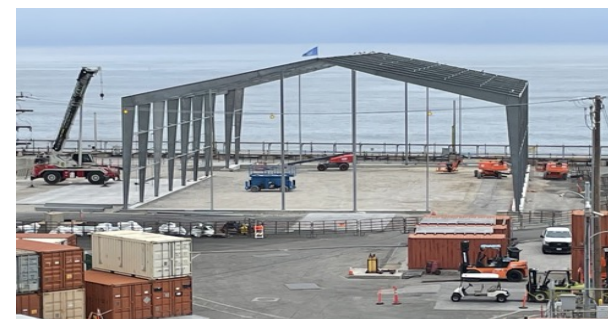
SAN ONOFRE DECOMMISSIONING UPDATE

3Q
2023

We continue building demolition through the decommissioning process, and we are currently erecting a new temporary structure known as the Material Handling Facility, or MHF. This steel structure will serve the important function of controlling any potential contamination from demolition materials by keeping it inside the MHF.

The tented MHF will accomplish this by providing a negative air pressure environment for the staging, processing, and loading of low-level radioactive debris before it's shipped off-site. Cleaning systems will be employed which include high volume fans, dust collectors, and filters. Checks and balances, including monitoring, will ensure all air released protects the health and well-being of our workers, our community, and the surrounding environment.

Safely removing and disposing of equipment, components, and debris remains an important milestone of our decommissioning efforts.








The Multi Handling Facility (MHF) Tent is Under Construction



DECONSTRUCTION ACTIVITY

All deconstruction activity will take place at the SONGS site

LEGEND	WORK ACTIVITY	WORK PERFORMED Q3 2023	WORK AHEAD Q4 2023
	North and East (parking lot) areas	<ul style="list-style-type: none"> Continued material delivery and removal 	<ul style="list-style-type: none"> Continue material delivery and removal
	Containment Buildings (the domes) and connected buildings	<ul style="list-style-type: none"> Continued interior demolition Continued reactor segmentation Began large component removal 	<ul style="list-style-type: none"> Continue interior demolition Continue reactor segmentation Continue large component removal
	Outer Buildings (administration buildings)	<ul style="list-style-type: none"> Continued to manage material and load railcars Began construction of MFH tent 	<ul style="list-style-type: none"> Manage material and load railcars Complete construction of MFH tent
	Turbine Building and Intake/Forebay Structure	<ul style="list-style-type: none"> Completed intake structure demolition Continued backfill of deep subgrade structures 	<ul style="list-style-type: none"> Complete backfill of deep subgrade structures
	South Yard Buildings	<ul style="list-style-type: none"> Began removal of hazardous materials and closure activities Began demolition of the Multi-Purpose Handling Facility (MPHF) 	<ul style="list-style-type: none"> Complete removal of hazardous material and demolition of MPHF
	Site wide	<ul style="list-style-type: none"> Continued site assessments and monitoring Continued waste shipments 	<ul style="list-style-type: none"> Continue site assessments and monitoring Continue waste shipments

Schedule is subject to change. In addition to the activities listed above, material deliveries and waste shipments will continue throughout the deconstruction period.



Crews Working on MFH Steel Erection



Southeast View of MPHF from San Onofre State Beach