



Decommissioning  
San Onofre  
Nuclear Generating Station

Safety | Stewardship | Engagement

## LEARN MORE ABOUT THE DECOMMISSIONING OF THE SAN ONOFRE NUCLEAR POWER PLANT.

# COME

to the plant and take a walking tour. Scan this QR code to schedule your visit.



# VISIT

[songscommunity.com](https://songscommunity.com) for the most current information about our decommissioning activities and deconstruction schedule.

# TALK TO US

We'd be happy to come share information about the plant with you, your community association or organization.

Decommissioning  
San Onofre  
Nuclear Generating Station



5000 Old Pacific Highway  
San Clemente, CA 92674

To contact our deconstruction liaison,  
call **800-681-6868** or email us at  
**SONGSdecomm@sce.com**



Decommissioning  
San Onofre  
Nuclear Generating Station

Safety | Stewardship | Engagement

## SAN ONOFRE DECOMMISSIONING UPDATE

4Q  
2023

2023 was a pivotal year for decommissioning as we surpassed 50 percent completion of the project. This is in no small part due to the incredible teamwork of our skilled crews. Since the start of decommissioning, over 2,000 personnel have worked on different phases of the project, all with a keen focus on safety. Key achievements and highlights:

- Complete removal of the Unit 3 turbine gantry crane, turbine building, and structures. The turbine deck once stood 73 feet tall.
- With 40 buildings demolished onsite and 22 left to go, 70 percent of the buildings have been removed since the project began.
- To maintain public access, we repaired the beach walkway and removed vehicle barriers.
- In 2023 alone, we shipped 143 million pounds of waste offsite. This brings us to a cumulative total of 302 million pounds of waste removed since the start of decommissioning. To put this into perspective, 4,500 waste shipments have left the site with 964 of those by rail.
- We hosted 64 tours, and 1,107 visitors at SONGS to learn about decommissioning.

There is still a tremendous amount of work planned in 2024. Schedule your walking tour now to see the changes at the site first-hand.






*The removal of the two turbine buildings and the Intake area resulted in 50,000 tons of concrete waste and over 35,000 tons of steel waste, including the components.*





## DECONSTRUCTION ACTIVITY

All deconstruction activity will take place at the SONGS site

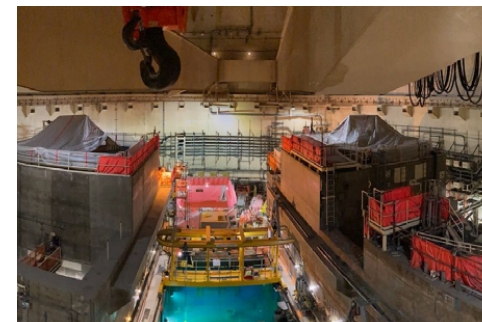
LEGEND	WORK ACTIVITY	WORK PERFORMED Q4 2023	WORK AHEAD Q1 2024
	North and East (parking lot) areas	<ul style="list-style-type: none"> <li>Continued material delivery and removal</li> </ul>	<ul style="list-style-type: none"> <li>Continue material delivery and removal</li> </ul>
	Containment Buildings (the domes) and connected buildings	<ul style="list-style-type: none"> <li>Continued interior demolition</li> <li>Continued reactor segmentation</li> <li>Continued large component removal</li> <li>Began surveys and hazmat removals from control building</li> <li>Began re-routing electrical source</li> </ul>	<ul style="list-style-type: none"> <li>Continue interior demolition</li> <li>Continue reactor segmentation</li> <li>Continue large component removal</li> <li>Continue surveys and hazmat removal from control building</li> <li>Complete re-routing of electrical source</li> </ul>
	Outer Buildings (administration buildings)	<ul style="list-style-type: none"> <li>Continued to manage material and load railcars</li> <li>Continued construction of loading tent</li> </ul>	<ul style="list-style-type: none"> <li>Continue to manage material and load railcars</li> <li>Complete construction of loading tent</li> <li>Begin removal of materials from oil/water separator and sewage treatment plant</li> </ul>
	Turbine Building and Intake/Forebay Structure	<ul style="list-style-type: none"> <li>Completed demolition</li> <li>Completed backfill of deep subgrade structures</li> </ul>	<ul style="list-style-type: none"> <li>No demolition work planned</li> </ul>
	South Yard Buildings	<ul style="list-style-type: none"> <li>Completed demolition of the Multi-Purpose Handling Facility (MPHF)</li> <li>Continue hazardous materials and closure activities for the former MPHF storage area</li> </ul>	<ul style="list-style-type: none"> <li>Continue hazardous materials and closure activities for the former MPHF storage area</li> <li>Begin pre-backfill surveys</li> </ul>
	Site wide	<ul style="list-style-type: none"> <li>Continued site assessments and monitoring</li> <li>Continued waste shipments</li> </ul>	<ul style="list-style-type: none"> <li>Continue site assessments and monitoring</li> <li>Continue waste shipments</li> </ul>

**Schedule is subject to change.** In addition to the activities listed above, material deliveries and waste shipments will continue throughout the deconstruction period.

## BEFORE



## AFTER



*Inside Unit 3 containment - the removal and cutting of main components such as the reactor coolant pumps, reactor vessel were completed in 2023.*