



Decommissioning San Onofre

Nuclear Generating Station

SONGS Decommissioning Update

Tom Palmisano
Vice President



Decommissioning
San Onofre
Nuclear Generating Station

Decommissioning Principles

Safety
Stewardship
Engagement

For more information on SONGS visit
www.SONGScommunity.com



Decommissioning
San Onofre
Nuclear Generating Station

Decommissioning Update

Topics provided in CEP meeting hand-outs:

- Decommissioning Plan
- Fuel Transfer to Passive Dry Cask Storage



Decommissioning
San Onofre
Nuclear Generating Station

What is the status of efforts to identify hazardous materials

- Sampling for hazardous materials as part of the planning process prior to dismantlement during decommissioning
- Expect to find hazardous materials: e.g., asbestos and lead
- Asbestos in Units 2/3 containment buildings and adjacent rooms
 - No airborne asbestos detected above acceptable levels
- Actions taken:
 - Access to areas restricted to authorized personnel; protective measures required to enter areas
 - Expanded sampling to determine extent of condition
 - Outside vendor performing clean-up

37



Decommissioning
San Onofre
Nuclear Generating Station

ENVIRONMENTAL PERMITTING UPDATE

California Environmental Quality Act (CEQA)

- Start of major decommissioning requires:
 - Certification of EIR* by California State Lands Commission (CSLC) under CEQA,
and
 - Issuance of CDP** by California Coastal Commission (CCC), relying upon EIR* by CSLC

* Environmental impact report

** Coastal development permit



Decommissioning
San Onofre
Nuclear Generating Station

Decommissioning Environmental Review

- CA State Lands Commission (CSLC) is reviewing comments on the Draft EIR
- SCE anticipates CSLC publishes Final EIR December 2018
- CSLC likely holds meeting to on Final EIR 1Q 2019
- SCE submits Coastal Development Permit (CDP) application to CA Coastal Commission (CCC) after Final EIR published
- SCE anticipates CCC-approved CDP by the 3Q 2019

40



Decommissioning
San Onofre
Nuclear Generating Station

RADIATION MONITORING AND REPORTING



Decommissioning
San Onofre
Nuclear Generating Station

Radiation monitoring & publicly available data

- SCE is committed to:
 - Ongoing radiation monitoring
 - 24/7 perimeter monitoring of ISFSI area as long as fuel is on site
 - Equipment will meet nuclear industry specifications
 - Implemented at completion of fuel transfer to ISFSI mid-2019
 - Real-time data feed to offsite agency with radiological expertise
 - Contracting with a third party agency that will
 - Monitor real-time data feed from SCE
 - Publish periodic data reports



Decommissioning
San Onofre
Nuclear Generating Station

Are the ISFSI radiation levels normal?

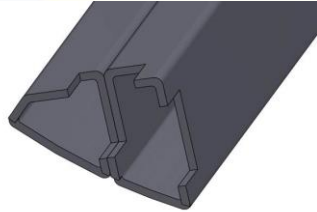
- Yes, the SONGS ISFSI radiation levels are normal
 - Independent measurements are consistent with SCE's measurements and confirm radiation levels are normal and far below regulatory limits
- County of San Diego performed survey on Sept. 24
 - County sent a senior health physicist to perform an independent survey
 - Readings were consistent with levels measured by SCE
 - County report available on [website](#)
- NRC performed survey during week of Oct. 22
 - Readings were consistent with levels measured by SCE



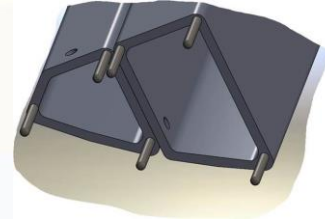
Decommissioning
San Onofre
Nuclear Generating Station

Shim Pin Update

Original Design



New Design





Decommissioning
San Onofre
Nuclear Generating Station

Resources Addressing Questions Unrelated to Canister Downloading

Topic	Further Information
Canister Inspection Technology and Used Fuel Defense-in-Depth	Interactive Graphic https://www.songscommunity.com/community-engagement/community-engagement-in-decommissioning/spent-nuclear-fuel-defense-in-depth
Chloride Induced Stress Corrosion Cracking and Through-Wall Cracks	3Q 2017 CEP Meeting https://www.songscommunity.com/internal_redirect/cms.ipressroom.com.s3.amazonaws.com/339/files/20181/Website%20-%20AMP.pdf https://www.songscommunity.com/internal_redirect/cms.ipressroom.com.s3.amazonaws.com/339/files/20181/Website%20-%20AMP.pdf
CA State Lands Commission San Onofre Environmental Impact Report	http://www.slc.ca.gov/info/CEQA/San_Onofre.html
Shim Pins and Thermal Analysis	2Q 2018 CEP Meeting Slides 30-35 file:///C:/Users/camargm/Downloads/SCE%20SONGS%20Decommissionig%20Update%206.27.18.pdf
Emergency Preparedness / Response	3Q 2015 CEP Meeting https://www.songscommunity.com/internal_redirect/cms.ipressroom.com.s3.amazonaws.com/339/files/20181/Emergency%20Planning%20and%20Preparedness%20Presentation.pdf https://www.songscommunity.com/internal_redirect/cms.ipressroom.com.s3.amazonaws.com/339/files/20181/Sara%20Kaminske%20Emergency%20Planning.pdf
Insurance Coverage	2Q 2018 CEP Meeting file:///C:/Users/camargm/Downloads/SCE%20SONGS%20Decommissionig%20Update%206.27.18%20(1).pdf

SAN ONOFRE
COMMUNITY
ENGAGEMENT
PANEL

Public Comment

Submit written comments to:
nuccomm@songs.sce.com

2019 CEP Meetings

Planned Focus Topics
Topics That Keep Coming Up
ISFSI-only Security & Emergency Plans
Defense-In-Depth for Dry Cask Storage
The State of Private Consolidated Interim Storage

Submit Additional Topic Recommendations to:

nuccomm@songs.sce.com

Likely topics to be integrated / workshops

- Extreme Events, Understanding Radiation & Emergency Response Workshop
- Ongoing Radiation Monitoring & Timely Publicly Available Data Workshop
- SONGS Decommissioning *Solutions* (General Contractor)

Subject to Change

Extreme Events Workshop Update

- Focus: Extreme events and emergency response
- Pre-planning scoping meeting with stakeholders
- Gathering expert-informed data / reports
- Guest speakers pending
- Workshop date in 2019 to be announced

SAN ONOFRE COMMUNITY ENGAGEMENT PANEL

MENU

SEARCH

Get Involved

- Request a speaker from San Onofre >
- Attend an event at San Onofre >
- Request a Walking Tour >
- Contact the CEP >
- Contact SONGS >
- Follow @SCE_SONGS

Useful Links

- About SONGS Decommissioning >
- Documents Library >
- SONGS OII (CPUC) website >
- NRC website >
- Nuclear Energy Institute >

Subscribe

First Name

Last Name

Email Address

Sign Up

SOUTHERN CALIFORNIA EDISON
AN ENERGY CORPORATION OF CALIFORNIA

Copyright © 2018 Southern California Edison. All Rights Reserved.

PRIVACY NOTICE

**Sign up on home page
to receive updates**

www.SONGScommunity.com



Acronyms

AMP	Aging Management Program
C&D	Cold & Dark
CCC	California Coastal Commission
CDP	Coastal Development Permit
CEC	Cavity Enclosure Container
CEP	Community Engagement Panel
CEQA	California Environmental Quality Act
CIS	Consolidated Interim Storage
CISCC	Chloride-Induced Stress Corrosion Cracking
CPUC	California Public Utilities Commission
CSLC	California State Lands Commission
D&D	Decontamination & Dismantlement
DA	Decommissioning Agreement; Decommissioning Agent
DCE	Decommissioning Cost Estimate
DDT	Decommissioning & Dismantlement Team
DGC	Decommissioning General Contractor
DID	Defense-in-Depth
DOD	Department of Defense
DOE	Department of Energy
DON	Department of Navy
DSAR	Defueled Safety Analysis Report (replaces FSAR)
DSC	Dry Storage Canister
D-SEIS	Draft Supplemental Environmental Impact Statement
D-SER	Draft Safety Evaluation Report
DTF	Decommissioning Trust Fund
EIR	Environmental Impact Report
EP	Emergency Plan
EPRI	Electric Power Research Institute
GEIS	Generic Environmental Impact Statement
IFMP	Irradiated Fuel Management Plan
ISFSI	Independent Spent Fuel Storage Installation
LAR	License Amendment Request
LOED	Large Organism Exclusion Device
MAPS	Managing Aging Programs in Storage

MARSSIM	Multi-Agency Radiation Survey Site & Investigation Manual
MOU	Memorandum of Understanding
NAHC	Native American Heritage Commission
NDCTP	Nuclear Decommissioning Cost Triennial Proceeding
NDE	Non Destructive Examination
NDTF	Nuclear Decommissioning Trust Fund
NEI	Nuclear Energy Institute
NEPA	National Environmental Policy Act
NGS	Nuclear Generating Station
NOP	Notice of Preparation
NPP	Nuclear Power Plant
NRC	Nuclear Regulatory Commission
OC	Orange County
PDEP	Permanently Defueled Emergency Plan
PDTS	Permanently Defueled Technical Specifications
PSDAR	Post-Shutdown Decommissioning Activities Report
REIR	Request for Environmental Impact Review
SCE	Southern California Edison
SD	San Diego
SDG&E	San Diego Gas & Electric
SDS	SONGS Decommissioning Solutions
SFP	Spent Fuel Pool
SFPI	Spent Fuel Pool Island
SLC	State Lands Commission (CA)
SLR	Sea Level Rise
SONGS	San Onofre Nuclear Generating Station
VCT	Vertical Canister Transporter
ZCAP	Zion Community Advisor Panel