



Decommissioning San Onofre

Nuclear Generating Station

Other SONGS Updates

Time Permitting

Tom Palmisano
Vice President



Decommissioning
San Onofre
Nuclear Generating Station

Decommissioning Principles

Safety
Stewardship
Engagement

For more information on SONGS visit
www.SONGScommunity.com

California Environmental Quality Act (CEQA)

- Start of major decommissioning requires:
 - Certification of EIR* by California State Lands Commission (CSLC) under CEQA,
and
 - Issuance of CDP** by California Coastal Commission (CCC), relying upon EIR* by CSLC

* Environmental impact report

** Coastal development permit



Decommissioning
San Onofre
Nuclear Generating Station

TIME PERMITTING

Decommissioning Environmental Review

- California State Lands Commission (CSLC) issued Final Environmental Impact Report (FEIR) 2/11/19
 - FEIR available at <https://www.slc.ca.gov/content-types/san-onofre/>
- CSLC certified SONGS Final EIR on 3/21/19
- SCE submitted a Coastal Development Permit (CDP) application to CA Coastal Commission (CCC) on 2/28/19
- SCE anticipates CCC-approved CDP by the 4Q 2019

42

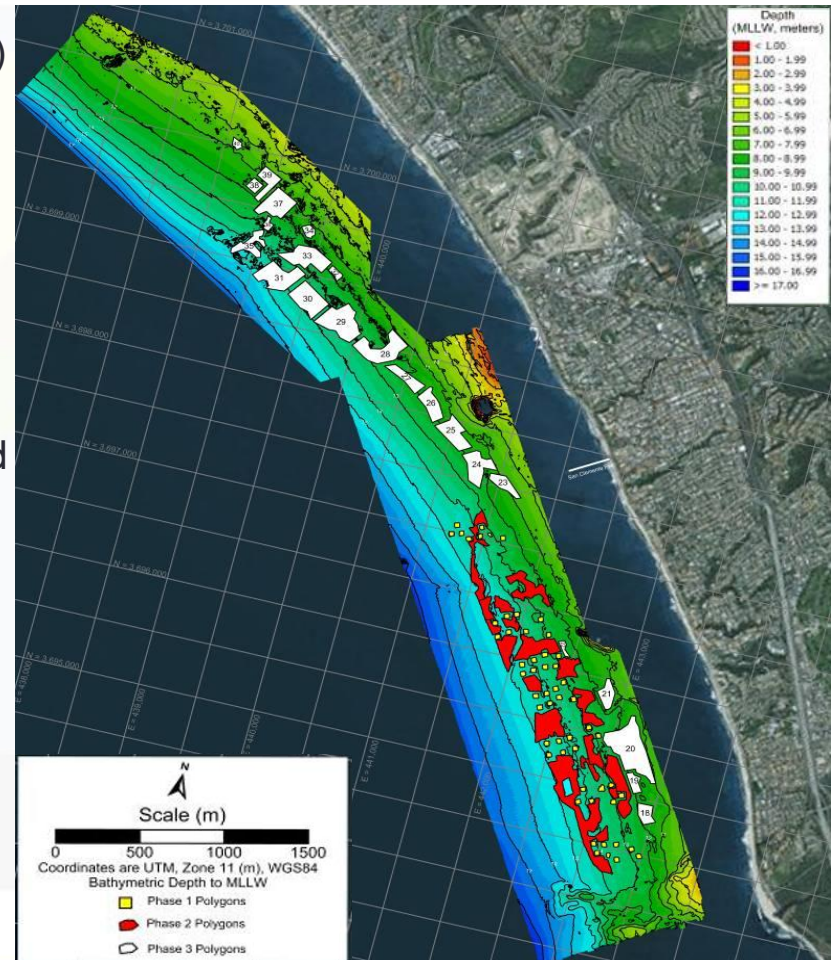


Decommissioning
San Onofre
Nuclear Generating Station

TIME PERMITTING

Reef Expansion Project

- Wheeler North Reef (SONGS Mitigation Reef) is located 1.5 miles off shore from the City of San Clemente
- It is constructed of quarry rock from Santa Catalina Island
- Phases 1 and 2 total 176 acres combined
- Phases 1 and 2 were constructed in 1999 and 2008 respectively
- Costs for Phases 1 and 2 include:
 - \$20M in construction costs
 - \$25M siting studies, EIR/S, final design and engineering, and permitting.
- The Expansion Reef, Phase 3, will be 200 acres of quarry rock from Catalina Island and Ensenada Mexico



43



Decommissioning
San Onofre
Nuclear Generating Station

TIME PERMITTING

Reef Expansion Project

- Goal is to expand capacity for fish biomass and kelp area to meet performance standards of the SONGS Coastal Development Permit
- California State Lands Commission (CSLC) certified the Final Environmental Impact Report (FEIR) February 4, 2019
 - FEIR available at <https://www.slc.ca.gov/ceqa/construction-management-of-an-artificial-reef-in-the-pacific-ocean-near-san-clemente-california-wheeler-north-reef-expansion-project/s://www.slc.ca.gov/content-types/san-onofre/>
- California Coastal Commission voted for approval on March 7, 2019
- Water quality permits with State Water Board and Army Corps of Engineers are in process – anticipated in April, 2019
- Construction schedule is May 1 through September 30, 2019.
- Current cost estimate for construction is \$20M

44



Decommissioning
San Onofre
Nuclear Generating Station

TIME PERMITTING

Radiation Monitoring & Publicly Available Data

- SCE is committed to:
 - Ongoing radiation monitoring
 - 24/7 perimeter monitoring of ISFSI area as long as fuel is on site
 - Equipment will meet nuclear industry specifications
 - Implemented at completion of fuel transfer to ISFSI mid-2019
 - Real-time data feed to offsite agency with radiological expertise
 - Contracting with a third party agencies that will
 - Monitor real-time data feed from SCE
 - Publish monthly data reports

45

SAN ONOFRE
COMMUNITY
ENGAGEMENT
PANEL

Public Comment

Submit written comments to:
nuccomm@songs.sce.com

2019 CEP Meetings

Future Topics
Topics That Keep Coming Up
ISFSI-only Security & Emergency Plans
Defense-In-Depth for Dry Cask Storage
The State of Private Consolidated Interim Storage

Submit Additional Topic Recommendations to:

nuccomm@songs.sce.com

Likely topics to be integrated / workshops

- Extreme Events, Understanding Radiation & Emergency Response Workshop
- Ongoing Radiation Monitoring & Timely Publicly Available Data Workshop
- SONGS Decommissioning *Solutions* (General Contractor)

Subject to Change



Decommissioning
San Onofre
 Nuclear Generating Station

Acronyms

AMP	Aging Management Program
C&D	Cold & Dark
CAP	Corrective Action Program
CCC	California Coastal Commission
CDP	Coastal Development Permit
CEC	Cavity Enclosure Container
CEP	Community Engagement Panel
CEQA	California Environmental Quality Act
CIS	Consolidated Interim Storage
CISCC	Chloride-Induced Stress Corrosion Cracking
CPUC	California Public Utilities Commission
CSLC	California State Lands Commission
D&D	Decontamination & Dismantlement
DA	Decommissioning Agreement; Decommissioning Agent
DCE	Decommissioning Cost Estimate
DDT	Decommissioning & Dismantlement Team
DGC	Decommissioning General Contractor
DID	Defense-in-Depth
DOD	Department of Defense
DOE	Department of Energy
DON	Department of Navy
DSAR	Defueled Safety Analysis Report (replaces FSAR)
DSC	Dry Storage Canister
D-SEIS	Draft Supplemental Environmental Impact Statement
D-SER	Draft Safety Evaluation Report
DTF	Decommissioning Trust Fund
EIR	Environmental Impact Report
EP	Emergency Plan
EPRI	Electric Power Research Institute
FIER	Final Environmental Impact Report
FTO	Fuel Transfer Operations
GEIS	Generic Environmental Impact Statement
HI-PORT	Holtec International – (Engineered Low Profile) Transporter
HI-TRAC	Holtec International – Transfer Cask

IFMP	Irradiated Fuel Management Plan
ISFSI	Independent Spent Fuel Storage Installation
LAR	License Amendment Request
LOED	Large Organism Exclusion Device
MAPS	Managing Aging Programs in Storage
MARSSIM	Multi-Agency Radiation Survey Site & Investigation Manual
MOU	Memorandum of Understanding
NAHC	Native American Heritage Commission
NDCTP	Nuclear Decommissioning Cost Triennial Proceeding
NDE	Non Destructive Examination
NDTF	Nuclear Decommissioning Trust Fund
NEI	Nuclear Energy Institute
NEPA	National Environmental Policy Act
NGS	Nuclear Generating Station
NOP	Notice of Preparation
NPP	Nuclear Power Plant
NRC	Nuclear Regulatory Commission
OC	Orange County
PDEP	Permanently Defueled Emergency Plan
PDTs	Permanently Defueled Technical Specifications
PSDAR	Post-Shutdown Decommissioning Activities Report
Q&A	Questions & Answers
REIR	Request for Environmental Impact Review
SCE	Southern California Edison
SD	San Diego
SDG&E	San Diego Gas & Electric
SDS	SONGS Decommissioning Solutions
SFP	Spent Fuel Pool
SFPI	Spent Fuel Pool Island
SLC	State Lands Commission (CA)
SLR	Sea Level Rise
SONGS	San Onofre Nuclear Generating Station
TBA	To Be Announced
VCT	Vertical Canister Transporter
ZCAP	Zion Community Advisor Panel